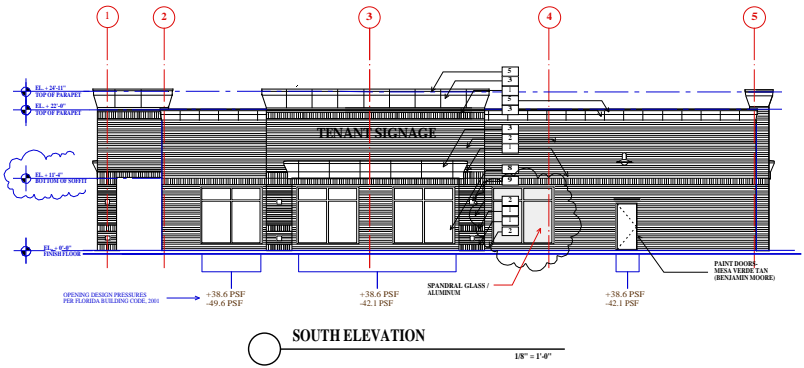
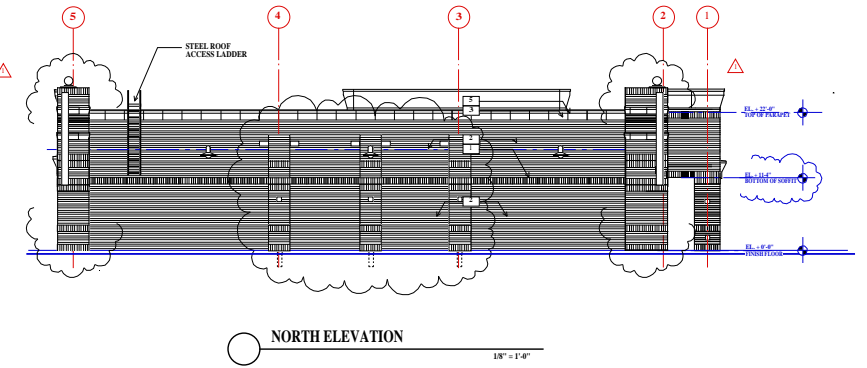


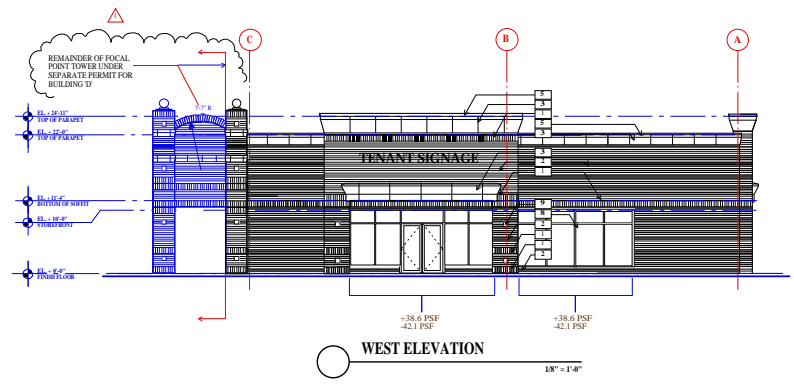
REVISIONS	BY
1	ML
2	ML
3	ML
4	ML
5	ML
6	ML
7	ML
8	ML
9	ML
10	ML
11	ML
12	ML
13	ML
14	ML
15	ML
16	ML
17	ML
18	ML
19	ML
20	ML
21	ML
22	ML
23	ML
24	ML
25	ML
26	ML
27	ML
28	ML
29	ML
30	ML
31	ML
32	ML
33	ML
34	ML
35	ML
36	ML
37	ML
38	ML
39	ML
40	ML
41	ML
42	ML
43	ML
44	ML
45	ML
46	ML
47	ML
48	ML
49	ML
50	ML



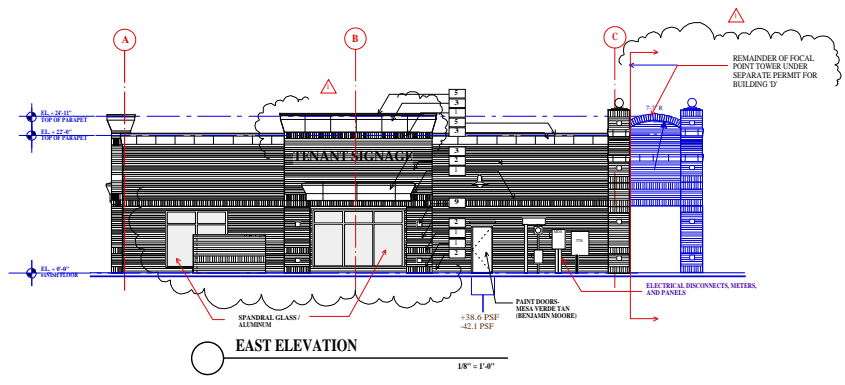
**SOUTH ELEVATION**  
1/8" = 1'-0"



**NORTH ELEVATION**  
1/8" = 1'-0"



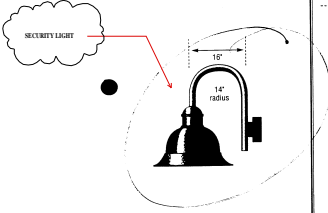
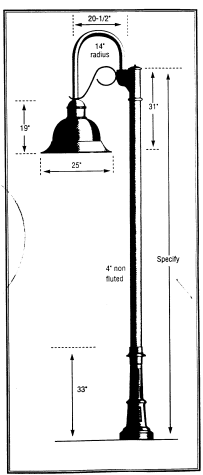
**WEST ELEVATION**  
1/8" = 1'-0"



**EAST ELEVATION**  
1/8" = 1'-0"

**WLS 748**

- Globe: 3/16" thick clear tempered glass
- Globe holder: Spin aluminum
- Reflector: Specular aluminum Type III, IV and IT
- Wattage: 100-150 watt
- Socket: Medium base
- Ballast: 100V (specify voltage)
- Pole: 4" diameter steel
- Base: Cast aluminum
- Finish: Brush enamel (specify color)



**WLS**  
LIGHTING SYSTEMS  
P.O. Box 100919  
Fort Worth, Texas 76185  
800-420-5171  
Fax 817-732-4824

NOTE: ALL SIGNAGE UNDER SEPARATE PERMIT

MATERIAL SCHEDULE			
RESERVE @ BOCA			2/12/83
NO	Material	Finish	Color / Remarks
1	BERBERK VINYL		LIGHT TAN
2	BERBERK VINYL		MEDIUM TAN
3	E.P.S. ON SHAPED FOAM REND	SIMULATED COQUINA	GET WHITE (U)
4	CAST STONE BANDING	SIMULATED COQUINA	GET WHITE
5	STUCCO	PRE-FINISHED	GET WHITE
6	PATCH CONCRETE		PATINA GREEN
7	SPANDREL GLASS / ALUMINUM	BLACK GLASS	
8	ALUM. & GLASS STOREFRONT	CLEAR GLASS / CLEAR ANODIZED	
9	E.P.S. TIE-AGENCY	CHROMIUM THERMAL - VULCAN	VERDE GREEN
10	ARCHITECTURAL LIGHT FIXTURE		
11	CONCRETE CURB CURB		
12	E.P.S. ON SHAPED FOAM	SIMULATED COQUINA	GET WHITE (U)

NOTES  
(U) E.P.S. FINISH SHALL BE CUSTOM COLOR BLEND TO MATCH SPECIFIED COLOR  
(U) NUMBERING OF CANOPY WALKWAYS SHALL BE XANY

OWNER:  
GAULTON BOCA ONE DEVELOPMENT, INC.

THE RESERVE at BOCA RATON  
GULF MOORE ROAD & STATE ROAD # 7  
PALM BEACH COUNTY, FLORIDA

Contract  
Permit  
Bid  
Date: 4/5/82  
Scale: 1/8" = 1'-0"  
Drawn: BT  
Job: 97629  
Sheet:  
**A3.01 'E'**  
Of: Sheets

B7089 - A3.01.E, 01-10/21/2025, PLOT: 10212628