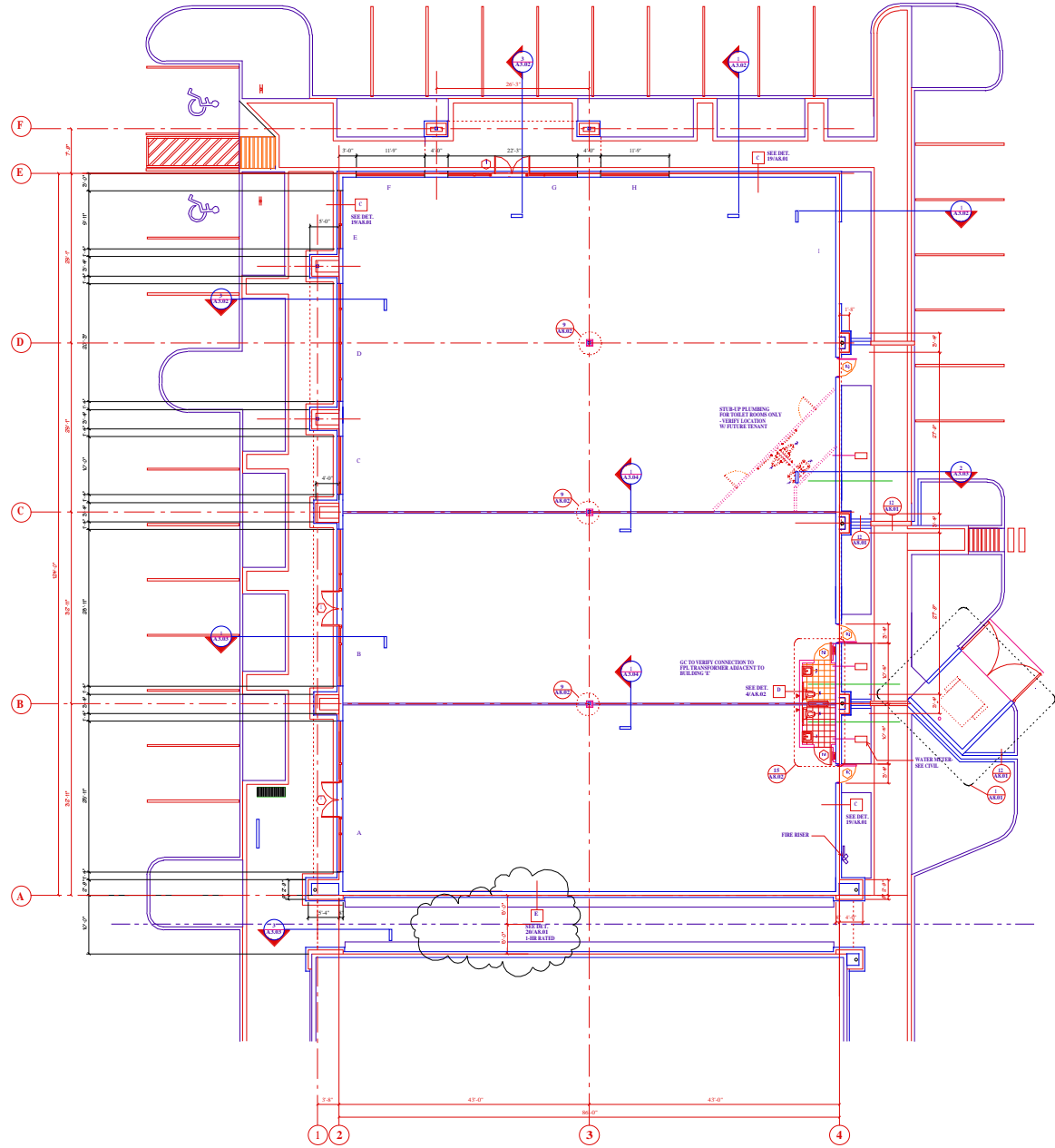


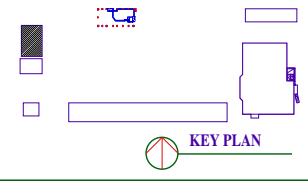
| NO. | DATE     | BY  | REVISIONS            |
|-----|----------|-----|----------------------|
| 1   | 04/15/02 | MAK | ISSUE FOR PERMITS    |
| 2   | 04/15/02 | MAK | REVISED PER COMMENTS |
| 3   | 04/15/02 | MAK | REVISED PER COMMENTS |
| 4   | 04/15/02 | MAK | REVISED PER COMMENTS |
| 5   | 04/15/02 | MAK | REVISED PER COMMENTS |
| 6   | 04/15/02 | MAK | REVISED PER COMMENTS |
| 7   | 04/15/02 | MAK | REVISED PER COMMENTS |
| 8   | 04/15/02 | MAK | REVISED PER COMMENTS |
| 9   | 04/15/02 | MAK | REVISED PER COMMENTS |
| 10  | 04/15/02 | MAK | REVISED PER COMMENTS |
| 11  | 04/15/02 | MAK | REVISED PER COMMENTS |
| 12  | 04/15/02 | MAK | REVISED PER COMMENTS |
| 13  | 04/15/02 | MAK | REVISED PER COMMENTS |
| 14  | 04/15/02 | MAK | REVISED PER COMMENTS |
| 15  | 04/15/02 | MAK | REVISED PER COMMENTS |
| 16  | 04/15/02 | MAK | REVISED PER COMMENTS |
| 17  | 04/15/02 | MAK | REVISED PER COMMENTS |
| 18  | 04/15/02 | MAK | REVISED PER COMMENTS |
| 19  | 04/15/02 | MAK | REVISED PER COMMENTS |
| 20  | 04/15/02 | MAK | REVISED PER COMMENTS |
| 21  | 04/15/02 | MAK | REVISED PER COMMENTS |
| 22  | 04/15/02 | MAK | REVISED PER COMMENTS |
| 23  | 04/15/02 | MAK | REVISED PER COMMENTS |
| 24  | 04/15/02 | MAK | REVISED PER COMMENTS |
| 25  | 04/15/02 | MAK | REVISED PER COMMENTS |
| 26  | 04/15/02 | MAK | REVISED PER COMMENTS |
| 27  | 04/15/02 | MAK | REVISED PER COMMENTS |
| 28  | 04/15/02 | MAK | REVISED PER COMMENTS |
| 29  | 04/15/02 | MAK | REVISED PER COMMENTS |
| 30  | 04/15/02 | MAK | REVISED PER COMMENTS |
| 31  | 04/15/02 | MAK | REVISED PER COMMENTS |
| 32  | 04/15/02 | MAK | REVISED PER COMMENTS |
| 33  | 04/15/02 | MAK | REVISED PER COMMENTS |
| 34  | 04/15/02 | MAK | REVISED PER COMMENTS |
| 35  | 04/15/02 | MAK | REVISED PER COMMENTS |
| 36  | 04/15/02 | MAK | REVISED PER COMMENTS |
| 37  | 04/15/02 | MAK | REVISED PER COMMENTS |
| 38  | 04/15/02 | MAK | REVISED PER COMMENTS |
| 39  | 04/15/02 | MAK | REVISED PER COMMENTS |
| 40  | 04/15/02 | MAK | REVISED PER COMMENTS |
| 41  | 04/15/02 | MAK | REVISED PER COMMENTS |
| 42  | 04/15/02 | MAK | REVISED PER COMMENTS |
| 43  | 04/15/02 | MAK | REVISED PER COMMENTS |
| 44  | 04/15/02 | MAK | REVISED PER COMMENTS |
| 45  | 04/15/02 | MAK | REVISED PER COMMENTS |
| 46  | 04/15/02 | MAK | REVISED PER COMMENTS |
| 47  | 04/15/02 | MAK | REVISED PER COMMENTS |
| 48  | 04/15/02 | MAK | REVISED PER COMMENTS |
| 49  | 04/15/02 | MAK | REVISED PER COMMENTS |
| 50  | 04/15/02 | MAK | REVISED PER COMMENTS |



- WINDOW SCHEDULE**
- A 25'-11" W X 6'-4" H
  - B 26'-11" W X 6'-4" H
  - C 16'-0" W X 6'-4" H
  - D 20'-0" W X 6'-4" H
  - E 9'-11" W X 6'-4" H
  - F 11'-0" W X 6'-4" H
  - G 22'-3" W X 6'-4" H
  - H 11'-0" W X 6'-4" H
  - I 14'-0" W X 6'-4" H

VERIFY ALL UTILITIES W/UTILE

6" DIAM. SEWER  
VERIFY ALL UTILITIES LOCATIONS W/UTILE



OWNER: SOUTHERN LOGICA ONE DEVELOPMENT, INC.

PROJECT: THE RESERVE at BOCA RATON  
GAINI MOORE ROAD & STATE ROAD 77  
PALM BEACH COUNTY, FLORIDA

Contract: \_\_\_\_\_  
 Permit: \_\_\_\_\_  
 Date: 4/15/02  
 Scale: 1/8" = 1'-0"  
 Job: 97029  
 Sheet: \_\_\_\_\_

of \_\_\_\_\_ Sheets