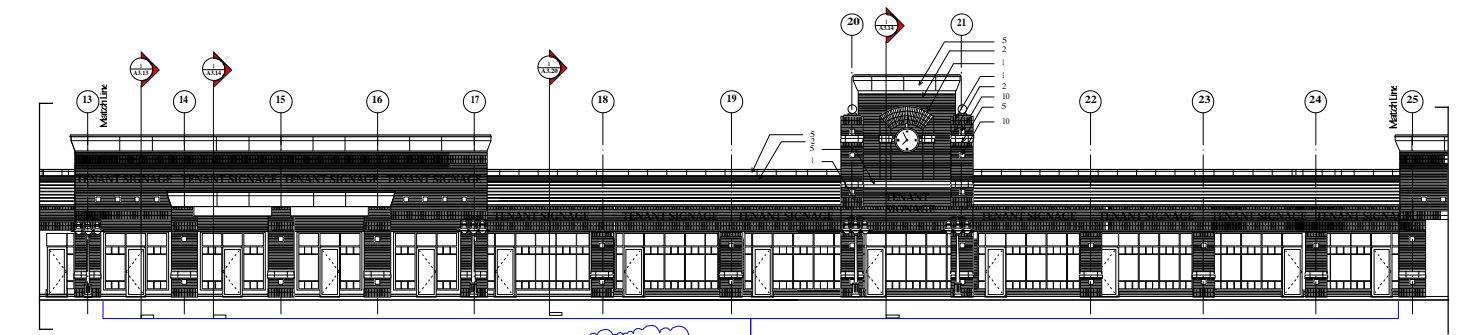
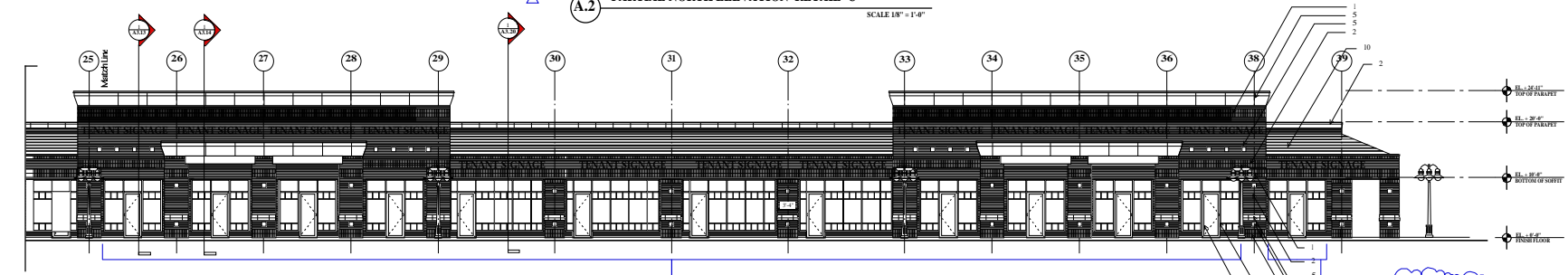


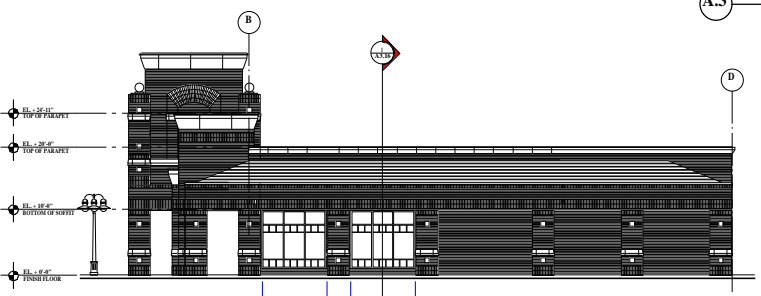
**A.1 PARTIAL NORTH ELEVATION RETAIL 'C'**  
SCALE 1/8" = 1'-0"



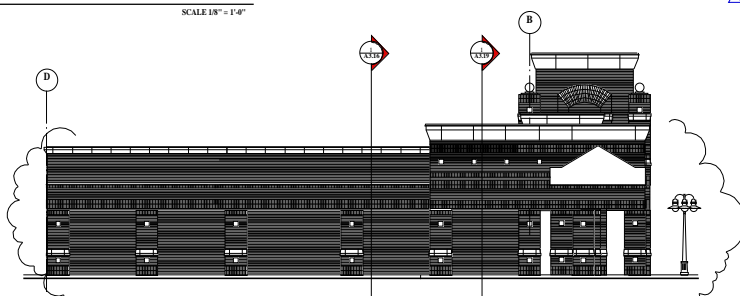
**A.2 PARTIAL NORTH ELEVATION RETAIL 'C'**  
SCALE 1/8" = 1'-0"



**A.3 PARTIAL NORTH ELEVATION RETAIL 'C'**  
SCALE 1/8" = 1'-0"



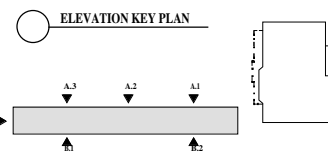
**WEST ELEVATION RETAIL 'C'**  
SCALE 1/8" = 1'-0"



**EAST ELEVATION RETAIL 'C'**  
SCALE 1/8" = 1'-0"

MATERIAL SCHEDULE				
9719	THE RESERVE	8/201		
CATEGORY	MARK	MATERIAL	FINISH	COLOR
WALLS	1	CBSBRICK VENEER	BRICK	LIGHT TAN
WALLS	2	CBSBRICK VENEER	BRICK	MEDIUM TAN
TOWER ACCENT	3	CBSBRICK VENEER	BRICK	LIGHT TAN
TOWER ACCENT	4	CBSBRICK VENEER	BRICK	MEDIUM TAN
TRIM	5	PRECAST	SMOULATED COQUINA	OFF WHITE TO MATCH PRECAST
ROOF	6	FLAT CONCRETE TILE		PAVING GREEN
WINDOWS	7	ALUMINUM & GLASS		CLEAR ANODIZED
WALLS	8	ALUMINUM		PSF
STOREFRONT DOORS	9	ALUMINUM GLASS		CLEAR ANODIZED
TILE ACCENT	10	CERAMIC	6 X 6	VERDE GREEN
LIGHT FIXTURE	11	ALUMINUM	PSF	VERDE GREEN

NOTE: ALL SIGNAGE UNDER SEPARATE PERMIT  
NOTE: NO LIGHTING TO BE PLACED ON BUILDING FACADE



REVISIONS	BY
1	BT
2	BT

MAXIMUM WATER A.I.A. APPROVED FOR CONSTRUCTION PERMIT  
APPROVED FOR CONSTRUCTION PERMIT  
DATE: 4/15/2012  
SCALE: 1/8" = 1'-0"  
DRAWN BY: BT  
JOB: 97809  
SHEET: A3.03 'C'  
OF: 3 SHEETS

OWNER: SAUTON BOCCA ONE DEVELOPMENT, INC.  
PROJECT: THE RESERVE at BOCCA RATON  
CLINT MOORE ROAD & STATE ROAD # 7  
PALM BEACH COUNTY, FLORIDA

Contract:  
Permit:  
Date: 4/15/2012  
Scale: 1/8" = 1'-0"  
Drawn By: BT  
Job: 97809  
Sheet: A3.03 'C'  
Of: 3 SHEETS