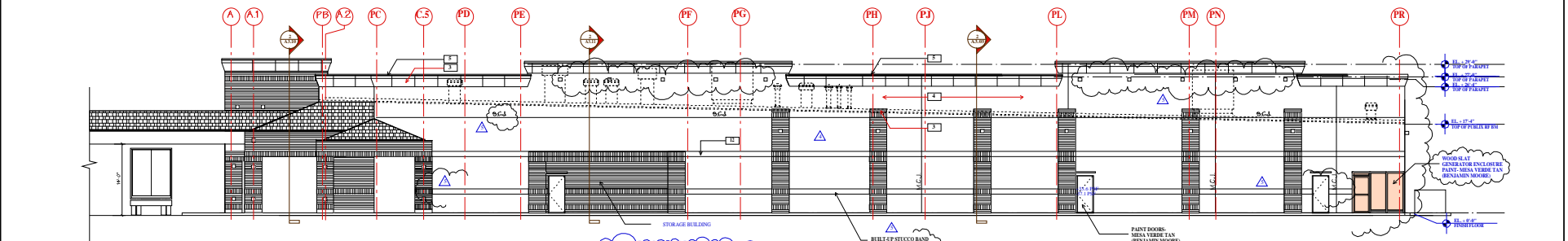


A FRONT ELEVATION (WEST) PUBLIX
SCALE 1/8" = 1'-0"

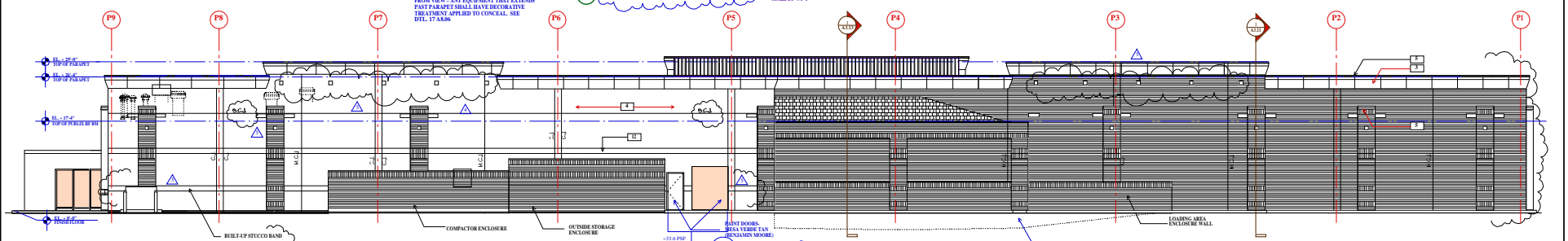
NOTE: ALL SIGNAGE UNDER SEPARATE PERMIT

NOTE: NO LIGHTING TO BE PLACED ON BUILDING FACADE

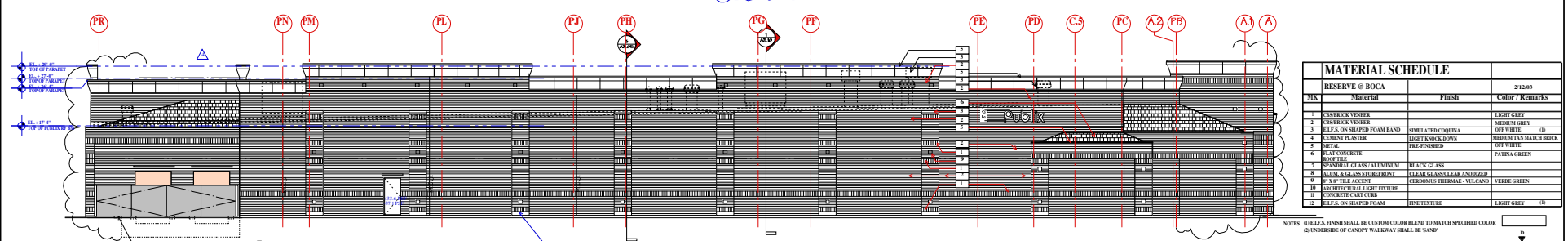


B SIDE ELEVATION (SOUTH) PUBLIX
SCALE 1/8" = 1'-0"

MECHANICAL EQUIP SHALL BE SCREENED FROM VIEW - ANY EQUIPMENT THAT EXTENDS PAST PARAPET SHALL HAVE OBSCURATIVE TREATMENT APPLIED TO CONCEAL. SEE DET. P. 4.06



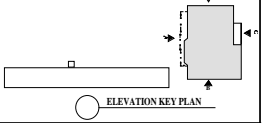
C REAR ELEVATION (EAST) PUBLIX
SCALE 1/8" = 1'-0"



D SIDE ELEVATION (NORTH) PUBLIX
SCALE 1/8" = 1'-0"

MATERIAL SCHEDULE		
RESERVE @ BOCA		
MK	Material	Finish Color / Remarks
1	CEMENT & VENEER	LIGHT GREY
2	CEMENT & VENEER	MEDIUM GREY
3	EIFS ON SLOPED FOAM BAND	SPF FIBRE (U)
4	CEMENT PLASTER	LIGHT KNICK-ROUN
5	EIFS	PRE-FINISH
6	BUILT CONCRETE	FATINA GREEN
7	SPANDX GLASS / ALUMINUM	BLACK GLASS
8	ALUM. GLASS SYSTEMS	CLERK GLASS / ANODIZED
9	P.F.F. THE SCENT	LYRIONIA THIRDMAL - VILLAND
10	ARTIFICIAL LIGHT FIXTURE	VERDE GREEN
11	CONCRETE CALCULUS	VERDE GREEN
12	EIFS ON SLOPED FOAM	FIN TEXTURE

NOTES: (1) EIFS FINISH SHALL BE CUSTOM COLOR BLEND TO MATCH SPECIFIED COLOR
(2) UNDERSIDE OF CANOPY WALKWAY SHALL BE SAND



REVISIONS	BY
1	REV. PER. REV. 01/20/20
2	REV. PER. REV. 01/21/20
3	REV. PER. REV. 01/21/20
4	REV. PER. REV. 01/21/20
5	REV. PER. REV. 01/21/20
6	REV. PER. REV. 01/21/20
7	REV. PER. REV. 01/21/20
8	REV. PER. REV. 01/21/20
9	REV. PER. REV. 01/21/20
10	REV. PER. REV. 01/21/20
11	REV. PER. REV. 01/21/20
12	REV. PER. REV. 01/21/20
13	REV. PER. REV. 01/21/20
14	REV. PER. REV. 01/21/20
15	REV. PER. REV. 01/21/20
16	REV. PER. REV. 01/21/20
17	REV. PER. REV. 01/21/20
18	REV. PER. REV. 01/21/20
19	REV. PER. REV. 01/21/20
20	REV. PER. REV. 01/21/20
21	REV. PER. REV. 01/21/20
22	REV. PER. REV. 01/21/20
23	REV. PER. REV. 01/21/20
24	REV. PER. REV. 01/21/20
25	REV. PER. REV. 01/21/20
26	REV. PER. REV. 01/21/20
27	REV. PER. REV. 01/21/20
28	REV. PER. REV. 01/21/20
29	REV. PER. REV. 01/21/20
30	REV. PER. REV. 01/21/20
31	REV. PER. REV. 01/21/20
32	REV. PER. REV. 01/21/20
33	REV. PER. REV. 01/21/20
34	REV. PER. REV. 01/21/20
35	REV. PER. REV. 01/21/20

OWNER: GUTMORRONE DEVELOPMENT, INC.
THE RESERVE at BOCA RATON
CLINT MOORE ROAD & STATE ROAD # 7
PALM BEACH COUNTY, FLORIDA

Contract:
Permit:
Date: 01/20/20
Scale: 1/8" = 1'-0"
Drawn: BT
Job: 97889
Sheet:
A3.01 'B'
Of: Sheets